



Museum Cabinets Storage Guide

Protecting Collections and Saving Space

A time-tested process to protect collections and save space.

Let's design from the inside out.

We see it all the time: even the most competent and esteemed museum professionals become a bit uncertain when faced with the daunting task of planning new collections storage areas.

Whether you're shopping for a single cabinet or renovating a collection area or new facility, this guide is intended as a starting point to help you take the first steps toward designing a new storage solution.

**We urge you to design from the inside out,
and by that we mean starting with the needs of your collection,
then ensuring that day-to-day procedures are as efficient as possible,
and then considering the physical constraints of your facility.**

By following this time-trusted method we can help you design a storage solution that protects the items entrusted to your care while also promoting efficiency and making the best use of limited storage space.

While your design project might seem formidable, keep in mind that we design specialized storage solutions every day. For nearly 50 years we've been helping some of the world's most prestigious institutions plan their storage layouts, select the products that will best protect their collections, and ultimately save time, money, and space.

**We're standing by to help preserve the
most important collection in the world: *Yours*.**



HISTORIC ST. MARY'S CITY

The study collection at Historic St. Mary's City is accessed multiple times every day, so staff wanted Museum cabinets mounted on an electronic compact storage system to facilitate storage and retrieval.

They also ordered counter-height cabinets fitted with wheels to keep artifacts organized and protected during transit to classrooms.

Lift-off doors make it easy for instructors to transfer artifacts between cabinets.

The project saves space, keeps the collections organized and protected, and provides convenient access.

EXCELLENCE IS STANDARD

The details set Spacesaver apart



CLOSED-CELL ELASTOMERIC SEAL

Our cabinets are manufactured with a steel channel designed to house an adhesive closed-cell seal. This protects the seal from accidental tears and abrasions and ensures and airtight seal around the entire door. It can be easily removed and replaced after decades of use.

MADE WITH PRIDE IN THE USA

Spacesaver's in-house expertise and experience is unsurpassed in the museum storage industry. Our engineering team and product managers team up at our state-of-the-art manufacturing facility in Fort Atkinson, WI. Our sales, installation, and service are provided by the Spacesaver Group of independent distributors, which operates throughout North America and around the world.



THREE-POINT LATCHING SYSTEM

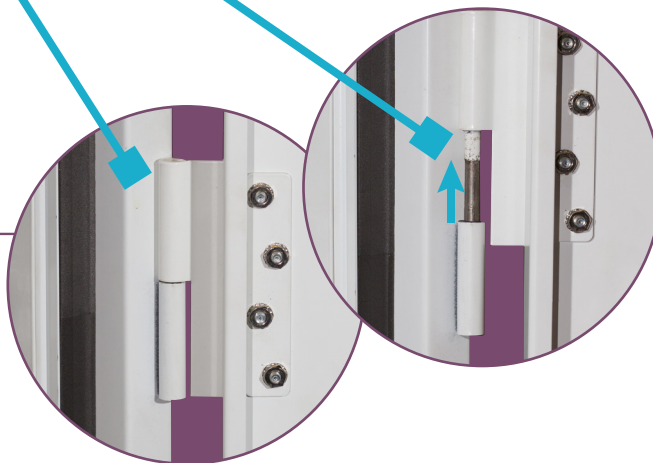
Our reliable and easy-to-use latching systems keep collections safe and secure. Our three-point latching system, particularly when combined with optional air vents, ensures the proper rate of air exchange inside the cabinets.

NON-OFF-GASSING POWDER-COAT PAINT

Our powder-coat paint provides a clean, durable finish that helps protect and preserve specimens and artifacts.

LIFT-OFF DOORS

Ideal for collections that are growing and changing, our lift-off doors offer quick convenience when transferring drawers or trays between cabinets.

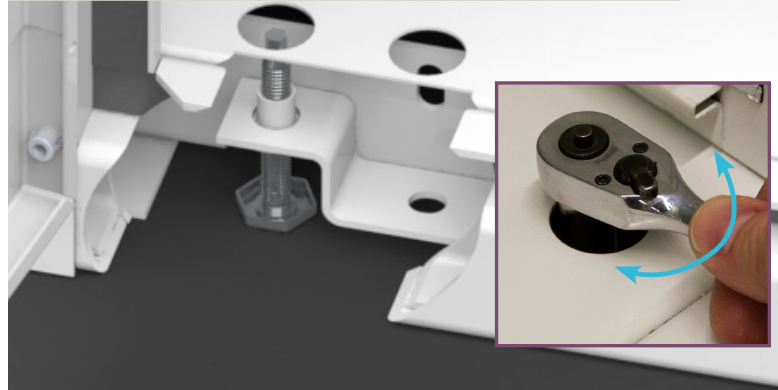


WATERSHIELD CAP

Our cabinets have no seams on the top, which means that collections are protected from water damage in case of overhead sprinkler deployment or malfunction.

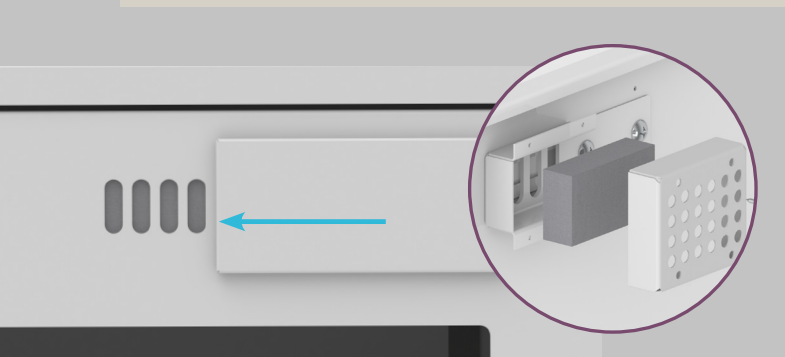
EASY-ACCESS LEVELERS

Accessible from inside the cabinet near the door, our levelers are convenient and easy to use.



OPTIONAL AIR VENTS

Vents with exterior-mounted closure mechanisms allow for convenient adjustment while cabinet doors are closed.



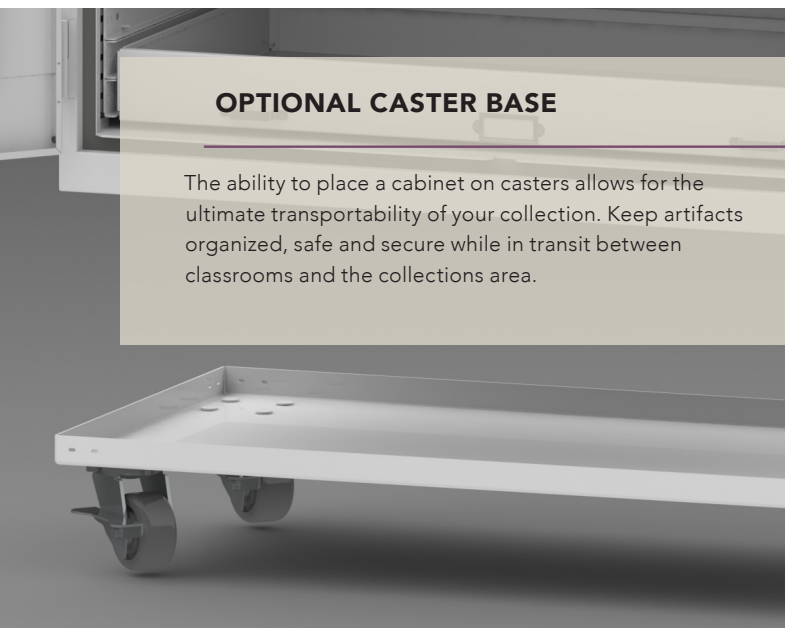
PERMA-SLIDE PAINT

Interior panels are finished with non-off-gassing perma-slide paint, which helps drawers and trays operate smoothly.



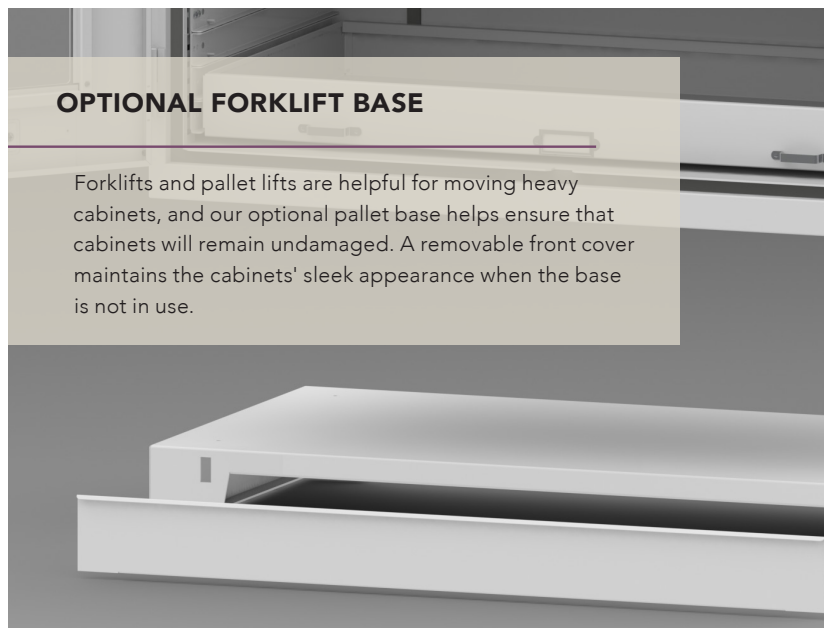
OPTIONAL CASTER BASE

The ability to place a cabinet on casters allows for the ultimate transportability of your collection. Keep artifacts organized, safe and secure while in transit between classrooms and the collections area.



OPTIONAL FORKLIFT BASE

Forklifts and pallet lifts are helpful for moving heavy cabinets, and our optional pallet base helps ensure that cabinets will remain undamaged. A removable front cover maintains the cabinets' sleek appearance when the base is not in use.



PRESERVATION CABINETS

920 Series

APPLICABLE COLLECTIONS:



Art



Historical



Natural

920 SERIES

Widths: 30", 36", 42", 48", 60"

Depths: 18", 24", 30", 36"

Heights: 42", 60", 72", 84", 96"



With a reconfigurable interior and a sturdy, modular frame, the 920 Series: Preservation Cabinet offers a unique combination of versatility and strength.

Interchangeable interior accessory panels allow for new configurations in the future, and these modular cabinets can be stacked, bolted together, or mounted on compact storage systems.



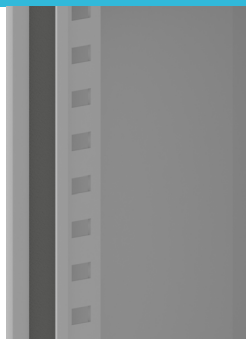
**Versatility built in.
Versatility for
the future.**

SHOWN WITH

- Optional visual lift-off doors
- Optional door vent
- Optional shelves
- Optional 2" trays
- Optional 4" trays
- WaterShield cap

INTERIOR MOUNTING OPTIONS

INTEGRATED CORNER POST



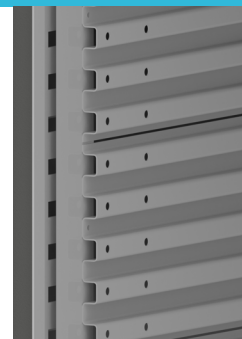
The integrated corner post comes standard on all 920 Series cabinets. It accepts a variety of accessories that can be mounted using clips, brackets, or mounts.

Optional Panel Insert SAFETY-STOP PANEL INSERT



This channel-in-channel panel (CIC) style is ideal for collections that typically stay inside the cabinet. It has safety stop mechanisms to prevent trays from accidentally extending.

Optional Panel Insert FULL-SLIDE PANEL INSERT



The corrugated panel (CORR) style allows users to completely remove trays from the cabinet for study or display, and it does not accept safety stop mechanisms.

OPTIONS

SHELVES

Standard



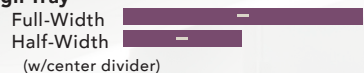
Heavy-Duty



EX Shelves can include an **Adjustable Hat Shelf/Coat Rod Unit**.

TRAYS

2" High Tray

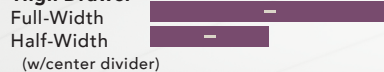


4" High Tray

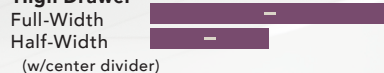


DRAWERS

3" High Drawer



4" High Drawer



6" High Drawer



Desiccant Drawer



Drawers can include a **Rolled Textile Unit**.

Drawers require your choice of **individual channel, 3-channel, 6-channel or 12-channel panel**.

HANDLES



Hansen Handle



Emka Handle

Sliding Closure Vents



IVY LEAGUE UNIVERSITY ART STUDY CENTER

An Ivy League University chose Spacesaver to provide comprehensive storage solutions for a new art study center. Museum cabinets were chosen following extensive third-party testing to ensure proper air exchange to protect the works of art inside, and compact mobile systems increased storage capacity.

Counter-height cabinets double as a convenient work surface.

Some cabinets were stacked and custom-sized to take full advantage of vertical space.

The project has created an immersive learning environment and provides better access to the collection.

PRESERVATION CABINETS

920 Series

UNIVERSITY OF WISCONSIN ZOOLOGY COLLECTION

The Zoological Museum at the University of Wisconsin-Madison stores nearly 750,000 specimens, including a number of type specimens. Spacesaver's preservation cabinets have provided secure storage for the collections for decades, and the cabinets continue to adapt as new specimens are acquired. From polar bears to small birds, the collection's specimens are protected by the cabinets' non-off-gassing powder-coat finish and a variety of other features.

Standard lift-off doors enable staff to easily relocate drawers as the collection expands.

The cabinets are configured to accept new drawers as well as legacy drawers, resulting in a seamless storage solution.

A non-off-gassing powder-coat finish is particularly important when storing zoological collections.

APPLICABLE
COLLECTIONS:



Art



Historical



Natural

PRESERVATION CABINETS

Geology - 920 Series

920 SERIES

Widths: 30", 36", 42", 48", 60"
Depths: 18", 24", 30", 36"
Heights: 42", 60", 72", 84", 96"



The 920 series has convenient lift-off doors and provides a variety of storage space that can be configured to accommodate shelves, drawers or trays.

SHOWN WITH

- Closed-cell elastomeric seal
- Lift-off door
- WaterShield cap
- Easy-access levelers
- Optional 2" trays
- Optional 4" trays

Ideal for geological specimens, our preservation cabinets can be configured to accommodate a variety of drawers and removable trays. The full-height cabinet, pictured at right, provides optimal storage capacity, while the counter-height version can be stacked or used as a work or display surface.

Sturdy storage for heavy specimens.

Design your cabinets to optimize space, provide room to grow, and promote efficiency throughout the collections area—now and in the future. Interchangeable cabinet liners allow for complete flexibility and the right accessories for your collection. (SEE PAGE 6 and 7 FOR ALL 920 SERIES OPTIONS)



ARIZONA STATE UNIVERSITY CENTER FOR METEORITE STUDIES

Our full-height cabinets were used in combination with custom-designed counter-height cabinets to store and display the world's largest university-based meteorite collection.

The cabinets' heavy-duty steel construction is built to support heavy specimens and provide decades of trouble-free daily use by staff and visiting researchers.

Visual doors permit viewing of contents.

Convenient lift-off doors allow staff and managers to quickly transfer items between cabinets as the collection grows.

This project required a number of custom cabinets as well our standard offerings.

PRESERVATION CABINETS

Oversized

APPLICABLE
COLLECTIONS:



Art



Historical



Natural

MODEL 395 181 cu. ft.
94 1/2" W x 49 29/32" D x 78 3/4" H



SHOWN WITH

- Full-width shelves
- Full-width 3 1/2" Drawer
- WaterShield cap
- Bi-fold lift-off doors

The colossal Model 395 cabinet is ideal for protecting large specimens and artifacts. The bi-fold doors on this extra-large cabinet facilitate access to stored items, and the doors can lift completely off to offer access to multiple cabinet interiors at the same time.

Perfect for pelts, quilts, and other large items that need a climate-controlled environment.

Sturdy steel construction and a variety of optional accessories, including dividers, shelves, and drawers, make it easy to customize this versatile cabinet to accommodate virtually any need.

OPTIONS

DRAWERS

1 1/2" High Drawer

- Full-Width
- Half-Width
- (w/center divider)

3 1/2" High Drawer

- Full-Width
- Half-Width
- (w/center divider)

Desiccant Drawer

- Full-Width

HANDLES



Lever



Hansen
Handle



Emka
Handle



Sliding Closure Vents



**APPLICABLE
COLLECTIONS:**



Art



Historical



Natural

FLAT FILE CABINETS

Archival

Providing secure protection for maps and other two-dimensional items, our flat file cabinets offer an enduring value for museums, archives, and other institutions.

**Flawless function and
enduring value.**

Stainless steel tracks and plated rollers ensure that our flat file drawers operate smoothly day after day, year after year. Model 424, pictured at left, features a

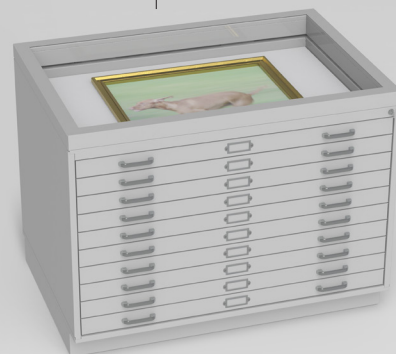
"showcase" glass top to easily display individual works of art.

Developed in cooperation with an art museum, Model 424 features a display top that provides convenient, easily managed storage and display.

SHOWN WITH

Display top
Cushioned drawer bumpers
Drawers with safety stops

MODEL 424 45 7/8"W×32 1/2"D×36"H



OTHER FLAT FILE CABINETS

MODEL 420-4

54 21/100"W×40 1/4"D×17 5/8"H



The 420-4 model features four 3" drawers and can be stacked to create a convenient workspace.

MODEL 420-5

54 21/100"W×40 1/4"D×17 5/8"H



The 420-5 has five 2 1/2" drawers with the same features across the 420 series.

MODEL 420-6

54 21/100"W×40 1/4"D×17 5/8"H



The 420-6 has six 2" drawers with the same features across the 420 series.

MODEL 423

91 24/25"W×60 3/4"D×17 5/8"H



The extra-wide 423 provides ample storage for exceptionally large items. It has four 3" drawers.

MADISON MUSEUM OF CONTEMPORARY ART

When the Madison Museum of Contemporary Art needed a way to provide both storage and display for two-dimensional art, the staff called on Spacesaver to provide a secure and creative solution. The cabinets house a variety of artwork and the staff can easily switch out items in the top display drawer to coordinate with current exhibitions.

Tempered low-lead glass panels on the top of each cabinet allow viewing into the top drawer.

Top drawers feature a linen-covered panel to provide a finished appearance for the display areas.

The cabinets' non-off-gassing finish offers archival-quality protection for stored items.

BOTANY/HERBARIUM CABINETS

APPLICABLE
COLLECTIONS:



Art



Historical

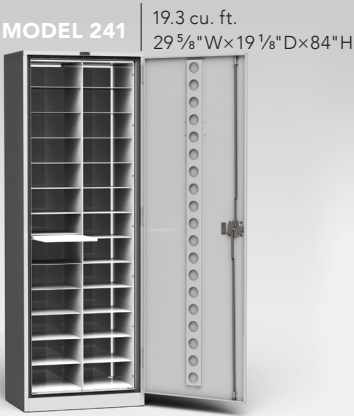


Natural

The mid-size Model 241 has a single lift-off door and 26 compartments. Our standard elastomeric seal, housed in a purpose-made steel channel, protects specimens from moisture and other contaminants.

SHOWN WITH

- Closed-cell elastomeric seal
- Lift-off door
- WaterShield cap
- Pull-out work shelf



Designed to preserve and protect botanical specimens, our line of botany cabinets have extra space in the front and back of the compartments to promote the free circulation of air and fumigants. The full-height models feature a convenient pull-out reference shelf, and the counter-height model can be stacked or used as a work surface.

Unique design promotes better air circulation.

OPTIONS



Lever



Hansen Handle



Emka Handle

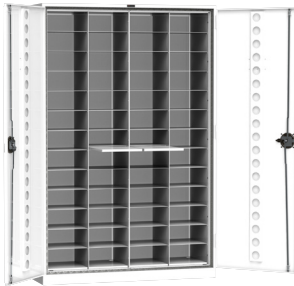
OTHER BOTANY CABINETS

MODEL 240 8.9 cu. ft.
29 5/8"W x 19 1/8"D x 42 7/16"H



Our counter-height botany cabinet features 12 compartments and the standard three-point latching system.

MODEL 242 38.7 cu. ft.
55"W x 19 1/8"D x 84"H



The large, double-door Model 242 has 52 compartments and two pull-out work shelves.



**APPLICABLE
COLLECTIONS:**



Art



Historical



Natural

ENTOMOLOGY CABINETS

Our entomology cabinets are compatible with the four standard entomology drawer styles and are

Customizable to accommodate Cornell, USNM, California Academy, and Smithsonian drawer styles.

commonly used with optional fumigant pockets. We offer full-height and counter-height models to suit the

needs of your collection and facility.

MODEL 520

23"W×20³/₈"D×42¹/₂"H



With the ability to accommodate any standard or custom entomology drawer, the Model 520 is a sturdy and versatile counter-height cabinet.

SHOWN WITH

- Closed-cell elastomeric seal
- Three-point latching system
- Lift-off door
- WaterShield cap
- Optional wooden drawers

OPTIONS



Lever



Hansen
Handle



Emka
Handle

OTHER ENTOMOLOGY CABINETS

MODEL 521

23"W×20³/₈"D×84"H



This full-height, single-door cabinet features a convenient pull-out work shelf and measures 23" wide and 20-3/8" deep.

MODEL 522

43¹⁵/₁₆"W×20³/₈"D×84"H



Our popular Model 522 offers two doors and two pull-out work shelves. As with our other entomology cabinets, extra air space promotes the circulation of air and fumigants.



CHICAGO FIELD MUSEUM

When the Field Museum decided to consolidate and relocate millions of specimens in the Division of Insects' collection, Spacesaver was chosen to provide more than a thousand cabinets on compact mobile storage systems.

Custom entomology cabinets maximized floor space while complying with fire codes.

We provided oversight and coordination, ensuring that this complicated project was completed on time and on budget.

COMPLETE MUSEUM STORAGE SOLUTIONS

Although we specialize in museum cabinets, we also offer a suite of other collections care solutions for museums, archives, and repositories.

All our products are engineered and manufactured in the USA and can be custom designed to fit the needs of your collection, your staff, and your facility.

COMPACT

Spacesaver got its start as an innovator in compact storage systems, and we still excel at helping our clients store more items in less space. Most of our products, including art racks, wide-span shelving, and cabinets, can be mounted on compacting carriage-and-rail systems. These systems eliminate wasted aisle space, permitting high-density storage while maintaining the highest standards of organization, accessibility, and preservation. Our compactor systems are particularly cost-effective in climate-controlled environments.

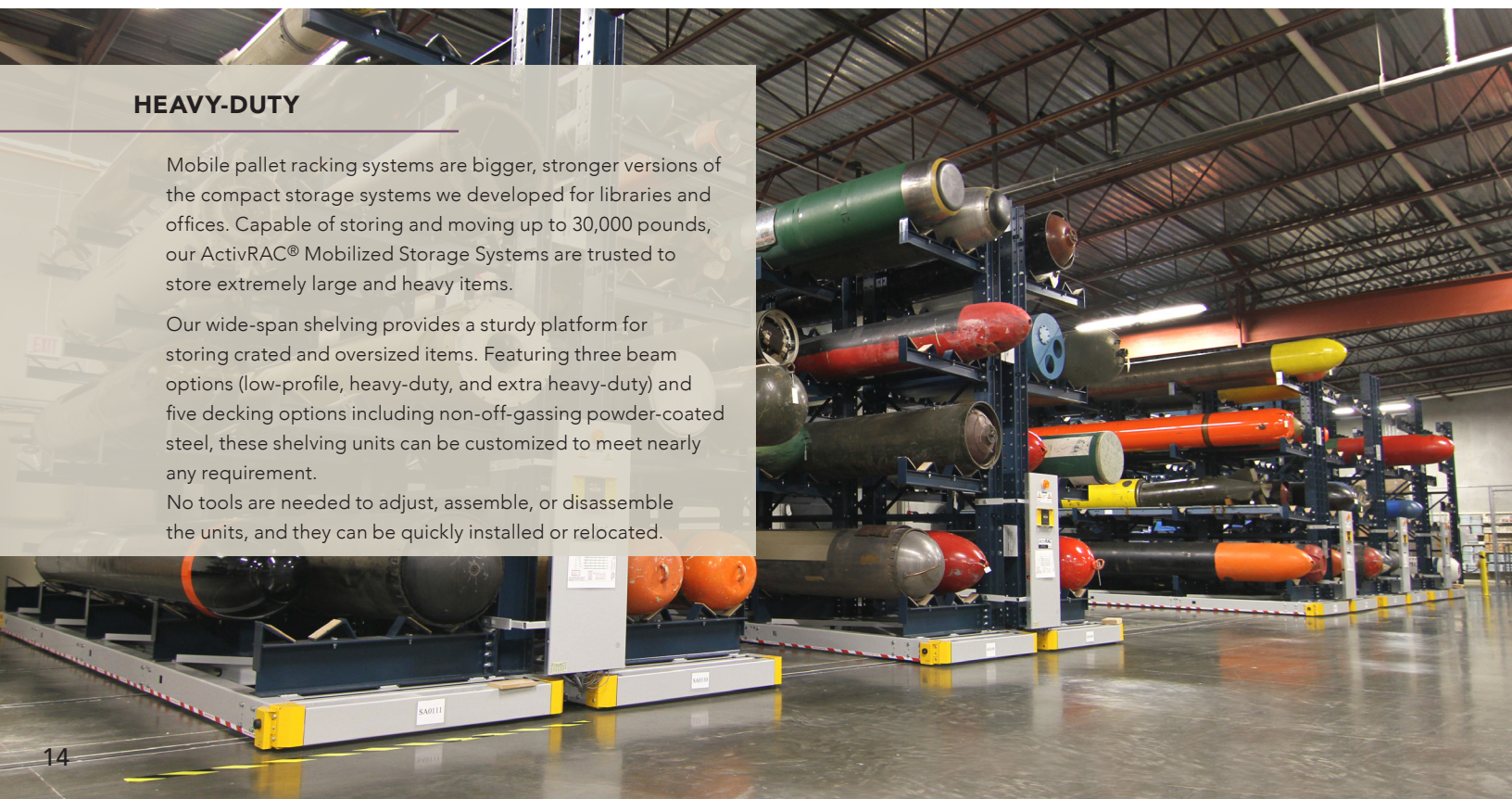


HEAVY-DUTY

Mobile pallet racking systems are bigger, stronger versions of the compact storage systems we developed for libraries and offices. Capable of storing and moving up to 30,000 pounds, our ActivRAC® Mobilized Storage Systems are trusted to store extremely large and heavy items.

Our wide-span shelving provides a sturdy platform for storing crated and oversized items. Featuring three beam options (low-profile, heavy-duty, and extra heavy-duty) and five decking options including non-off-gassing powder-coated steel, these shelving units can be customized to meet nearly any requirement.

No tools are needed to adjust, assemble, or disassemble the units, and they can be quickly installed or relocated.





ART RACKS

Art racks provide compact storage and convenient access to hanging art, and we offer a variety of options to suit any space. We offer ceiling-mounted hand-controlled manual art rack systems, along with floor-mounted high-density art storage rack systems, free-standing modular art racks, and 4-Post Art Racks, which can be mounted on mobile carriages and integrated into compact storage systems with other Spacesaver specialty storage units.

Art racks are equipped with anti-tip and anti-vibration mechanisms to ensure that artwork is protected.




HIGH-BAY STORAGE SYSTEMS

For institutions that need to take full advantage of the vertical space in a tall building or off-site warehouse, particularly when those facilities are climate-controlled, our high-bay systems offer an exceptional return on investment. Our static high-bay systems allow clients to use nearly every inch of vertical space, and we hold the patent for the XTend® Mobile High-Bay Storage System, which eliminates wasted aisle space to increase capacity even more. Your local Spacesaver consultant can provide drawings and analyses to help justify funding requests.



TEXTILE RACKS

Fully adjustable cantilever textile racks encourage best practices in the storage of rolled flags, quilts, rugs, and other textiles.



ARCHIVAL SHELVING

When choosing shelving units, keep in mind that we offer perforated shelving, end panels, and uprights to allow increased air circulation.



LOW-LEVEL LIGHTING SYSTEMS

Our optional low-level lighting systems are activated only when aisles are opened, limiting unnecessary light exposure.

IT'S MORE THAN PRODUCTS. IT'S THE PROCESS.

You've spent years focusing on caring for the items in your collection and we've spent years focusing on how to store them thoughtfully. We'll help you **design from the inside out** to create the ideal solution for your space and collection.

Your storage solution starts with a free space assessment with your local Spacesaver consultant, who has the knowledge and training to make the best use of your space while providing the best in collections care. From there, our in-house project management team will coordinate the details of your project with our engineering and manufacturing teams from design to completion. Your local Spacesaver dealer will take care of installation, maintenance, and service over the life of your facility.

Contact us today to protect your collections, save space, and improve efficiency.

SPACESAVER.com | **800.492.3434**



Spacesaver Corporation
1450 Janesville Avenue
Fort Atkinson, WI 53538-2798
800.492.3434
www.spacesaver.com