

AURORA STORAGE

TIMES-2 MARKET APPLICATION GUIDE



AURORA

A SOLUTION FOR EVERY STORY

TABLE OF CONTENTS



Times-2™ Alcove Storage	1.
<hr/>	
Times-2™ Automotive Cabinets	2.
<hr/>	
Times-2™ Collaboration Tables	3.
<hr/>	
Times-2™ Cabinets for Corridor Space	4.
<hr/>	
Times-2™ Build-In Countertop Storage	5.
<hr/>	
Times-2™ Industrial Cabinets	6.
<hr/>	
Times-2™ Pass-Through Storage	7.
<hr/>	
Times-2™ Cabinets for Personal Protection Equipment (PPE)	8.
<hr/>	
Times-2™ School Nurse Cabinets	9.
<hr/>	
Times-2™ Sheet Music Storage	10.
<hr/>	
Times-2™ Weapons Storage Cabinets	11.
<hr/>	
Times-2™ Workstation Storage	12.



Redefine inefficient space with a best-in-class custom configured cabinet.

Every facility has small pockets of overlooked alcove space that can easily transform into an efficient and beautiful storage space.

- Enclose units with demountable walls or hard walls for a built-in finished appearance.
- A unique storage solution for Reception Areas, Medical Offices, Showrooms or Lobbies.
- Strategically locate Alcove Storage next to interior columns or elevator banks as a central storage area in hard-to-use space.
- Conceal reference materials and clutter from customer facing areas with a storage cabinet that projects a clean paneled look when closed and opens with a single spin.
- Allow employees to store personal belongings including coats, purses and backpacks in the wardrobe tower or individually locking drawers.
- 10 Heights from 29½" to 92½"
Starter widths of 36½" to 45½"



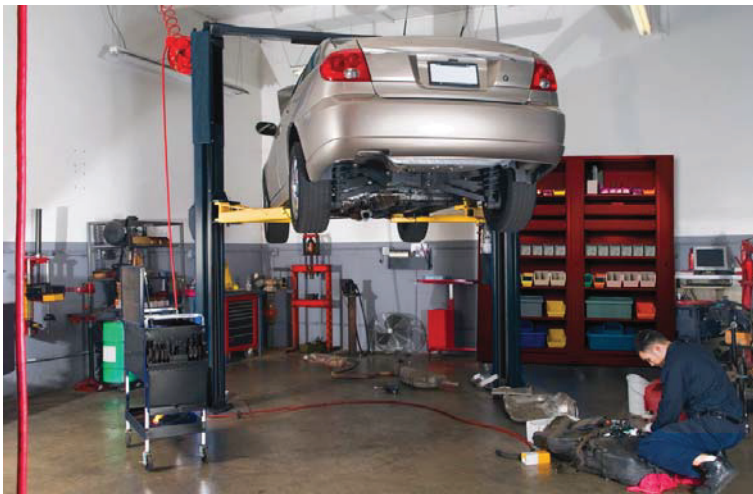
Times-2 Alcove Storage presents a way to maximize your facility space while creating a convenient place for your workers to reach everything they need.



Whether in the Sales Office, Showroom, Service Area or Shop – Times-2 fits into every car dealership with beautiful, versatile, and secure storage.

Times-2, the space-efficient, dual-sided cabinet is perfect for shared storage for multiple sales representatives.

- Keep dealership reception areas neat and organized with storage for car brochure, promo items, and beverage services. Spin Times-2 closed for a finished appearance.
- Customizable to your dealership needs using multiple interior accessory options.
- Cabinet key lock is standard with optional keypad lock.
- Make units mobile for shop tool areas by adding a caster kit.
- Interconnect counter height units to create a handy service area.
- Choose from 30 beautiful standard colors
- 10 heights from 20¹/₂" to 92¹/₂"
Starter widths of 36¹/₂" and 45¹/₂"





Support your project teams and departmental meetings with a dual communication and storage design.

Times-2 Collaboration Tables combine a conventional conference table with customizable storage. Maximize your team meetings or impromptu discussions by providing immediate access to reference tools and supplies.

- Store documents, binders, prints, project files, and small office supplies, all in one storage solution.
- Best used in groups of 4 or 6 back-to-back units with a conference or work surface.
- Support meetings at a seated height of 30 3/4" H or stool heights of 42 7/8" H.
- Cabinet lock and individual lockable drawers.
- Foot pedals or hand releases rotate storage.



Here's a great way to address departmental storage needs while also providing a way for workers to meet and collaborate.



SPECIFICATIONS

Suggested overall storage footprints:

- **25" Base Units Without Tops**
4 Units Cubed 68⁵/₈" W x 59³/₄" D
6 Units Cubed 99³/₈" W x 59³/₄" D
- **31" Base Units Without Tops**
4 Units Cubed 84⁵/₈" W x 73¹/₄" D
6 Units Cubed 99³/₈" W x 73¹/₄" D



Complement the trend toward smaller workstation design with a way to keep reference materials in close proximity to workers.

Position Times-2 Cabinets in strategic spots like hall ways and corridors to maximize the performance of you space.



- Enclose units with demountable walls, within a wall or freestand along the wall.
- Times-2 Rotary Cabinets feature quick access to departmental documents, binders or supplies.
- Close the unit with a single spin to keep areas looking neat and professional.
- Integrate customizable and flexible accessories including wardrobe units, individually lockable drawers, media drawers, and reference shelves.
- Locate storage on the interior walls of the space without sacrificing natural light flow through.
- Requires only 31" depth along a corridor or hallway.
- 10 heights from 29½" to 92½"
Starter widths of 36½" and 45¼"



Make the best possible use of smart, accessible storage placed nearby your workstations and benching tables



Maximize the potential of built-in countertop cabinetry with rotating shelf and drawer storage below.

- Efficient storage design that never leaves unused or unseen items at the back of a shelf.
- Great for Customer Service Desks, Copy Centers, Lunch Rooms, Mail Rooms, Reception Stations, Nursing Stations or Laboratories.
- Easily stores items like office supplies, toner cartridges, printer paper, kitchen and beverage items, paper reams or lab & medical supplies.
- Place into corners or abutt side walls using a Closing Strip to cover up exposed sides.
- Reconfigure the interior as your needs change.
- Cabinet lock and individual lockable drawers.



SPECIFICATIONS

- Suggested top overhang of $\frac{5}{8}$ " front or side.
- Countertops may be sourced locally or through Aurora Storage. Top dimensions available on request.
- Countertop heights of $41\frac{5}{8}$ " and $50\frac{3}{8}$ "
- Starter widths of $36\frac{1}{2}$ " and $45\frac{1}{4}$ "
- Overall space dimensions of storage units only below:



QTY	Letter Width Units	Legal Width Units
2 Wide	67 $\frac{1}{4}$ " W x 31" D	83 $\frac{3}{8}$ " W x 38 $\frac{1}{4}$ " D
3 Wide	98 $\frac{1}{4}$ " W x 31" D	121 $\frac{3}{4}$ " W x 38 $\frac{1}{4}$ " D
4 Wide	129" W x 31" D	159 $\frac{7}{8}$ " W x 38 $\frac{1}{4}$ " D
5 Wide	159 $\frac{3}{4}$ " W x 31" D	198" W x 38 $\frac{1}{4}$ " D



Storage units designed to support your production teams and built tough to endure the rigors of the shop floor.

Times-2 Industrial Cabinets offers a unique way for your business to store and move important manufacturing materials and shop tools close at hand.

- Available as stationary or mobile units.
- Lockable swivel casters make the mobile unit easy to roll and maneuver.
- Heavy-duty construction of metal frames and accessories are built to withstand abuse.
- Store chemicals, tools, documents, binders, project files or small supplies, all in one place.
- Customizable to your needs using multiple interior accessory options.
- Cabinet lock and individual lockable drawers.
- 10 heights from 29 1/2" to 92 1/2"
Starter widths of 36 1/2" and 45 1/4"
- Foot pedals or hand releases rotate storage.
- Available with an optional side-mounted worksurface or rollout reference shelf for writing or laptop use.

Designed to help manufacturing and service technicians maintain cleanliness, efficiency and organization around their work cells.

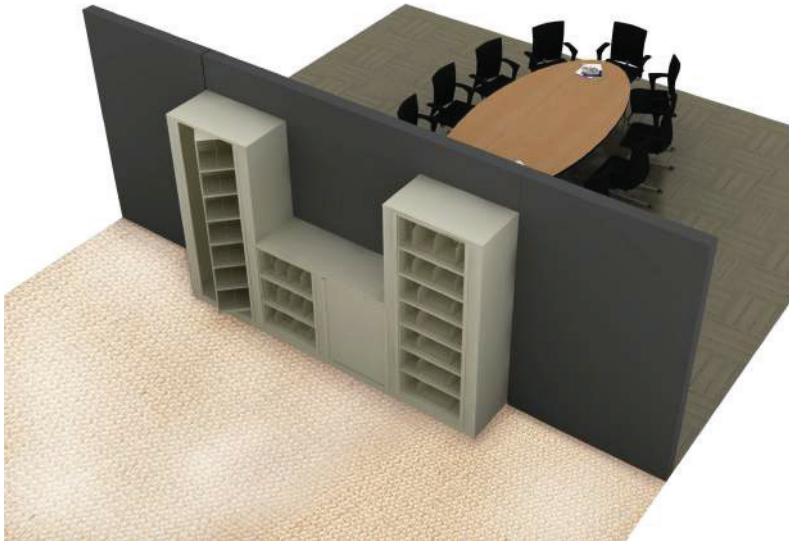
SPECIFICATIONS

- Mobile Units are restricted to 60 7/8" Height (5-Tier)
- Shelf weight load: 100 lbs
- Drawer weight load: 120 lbs



A unique storage solution capable of two-way access to stored contents from adjoining areas in your facility.

- Rotary action allows items to be stored and replenished from different rooms.
- Enclose units with demountable walls or hard walls for a built-in finished appearance.
- Position in an open plan area where workers from adjoining departments or teams can gain access to common materials from two different sides.
- Great for Conference Rooms, Hotel Meeting Rooms, Stock Rooms or Training Centers.
- Reconfigure the interior accessories as your storage needs change.
- Cabinet lock and individual lockable drawers.
- 10 heights from 29½" to 92½"
Starter widths of 36½" and 45¼"



Today's design environment calls for flexible and adaptable space. Use the Times-2 Pass-Through Cabinets to solve unique storage requirements that other basic filing cabinets simply cannot provide.

TIMES-2 ROTARY

FOR PERSONAL PROTECTION EQUIPMENT (PPE) CABINETS



Versatile lockable cabinets are reconfigurable to store various types of safety gear and equipment for your in-plant office, tool shop, or medical emergency area.

- Cabinets customizable to your needs using multiple interior accessory options.
- Cabinet lock and individual lockable drawers
- Foot pedals or hand releases rotate storage
- Spin the Times-2 PPE Cabinet open and closed to keep your supplies easily accessible yet secure!
- Choose from 30 standard colors or custom finishes like antimicrobial or a color match.
- 10 heights from 29 1/2" to 92 1/2"
Starter widths of 36 1/2" and 45 1/4"
Mobile units are restricted to 607/8" Height (5-Tier)
- PPE can be made mobile with lockable swivel casters that makes the unit easy to roll and maneuver.



Adjust shelves and drawers to store items such as:

Medical

- Masks & Surgical Gear
- Medication
- First Aid Kits
- Testing Equipment
- Hanging Bags
- Sanitation & Cleaning Solutions
- Patient files

Safety

- Hard Hats
- Safety Glasses
- Gloves
- Tools
- Safety Vests
- Aprons
- Binders



Efficiently organize and manage medical supplies, pharmaceuticals and records all in one storage cabinet.

- Stores student medical records or nurse's personal items in lockable drawers on one side or both.
- Integrate a narcotics-grade security enclosure to lock student medications.
- 3 $\frac{1}{2}$ " high drawers with front-to-back dividers keep supplies accessible and separated.
- Use color-coded bins to separate contents by student, sex or grade level.
- Hanging rails accommodate student prescriptions in pharmacy style pick-up bags.
- Cabinet locks offered as key or numeric code access.



SPECIFICATIONS

- 10 heights from 29 $\frac{1}{2}$ " to 92 $\frac{1}{2}$ "
- Starter widths of 36 $\frac{1}{2}$ " and 45 $\frac{1}{4}$ "
- Foot pedals or hand release rotate storage

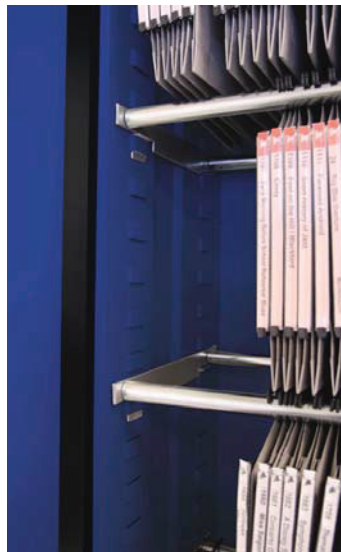
Times-2 School Nurse's Cabinets help you keep everything you need to attend to your students using the smallest space possible.



Organize your music classrooms with unique storage cabinets that hold up to three times more sheet music than other file cabinets.

Bring organization and space saving to your band and choir rooms so you don't miss a beat! Easily store over 1,000 different titles.

- Customizable to your needs using multiple interior accessory options.
- Cabinet lock and individual lockable drawers.
- Customize the interior to store small instruments, confidential student files, lesson plans and staff personal items on one side, sheet music on the reverse.
- Special brackets and hanging folders keep music organized. (Folders supplied by others.)
- Choose from 29 standard colors or custom match to your school's colors.
- 10 heights from 29 1/2" to 92 1/2"
Starter widths of 36 1/2" and 45 1/4"



Spin the Times-2 Music Cabinet open and closed to keep your sheet music neatly organized and always in play.



An efficient and adaptable way to your weapons assortment securely.

- Store handguns, rifles or a combination in a two-sided unit with shelves or bin space for ammo and protective gear.
- Capacity of up to 77 handguns or 10 rifles per side horizontally.*
- Brackets and Racks accommodate multiple weapon types and sizes.
- All weapons bracket surface edges standard with a high-density neoprene rubber protective edging.
- Cabinet lock and individual lockable drawers.
- 10 heights from 29¹/₂" to 92¹/₂"
Starter width 45¹/₄" only

SPECIFICATIONS

- **Universal Back Panel Heights**
10 ¹/₂", 21" or 31 ¹/₂"
- **Handgun Brackets**
1, 5, 6, 7, 8, 9, or 11 Handguns
Optional integrated clip compartments below gun.
- **Barrel and Stock Holders**
5 ¹/₂" (140 mm), 7" (178 mm) depths
1, 4, 5, 6, 7, 8, or 10 Rifles
Used with Sloped Stock Shelf and Adjustable Stop to retain stocks.
- **Small Parts and Ammo Bins**
3" (76 mm), 6" (152 mm) widths.

*Total weapons capacity is based on actual cabinet and weapons dimensions.





Augment your open plan workstations with unique, space-efficient, personalized storage.

As workstation design gets smaller with less storage, the Times-2 Cabinet is a viable option to maintain access to business and personal items in close proximity. Performs like part-lateral file, part-locker and part-pedestal.

- Deploy at worksurface height next to your benching and desking products or position adjoining towers.
- Use in standalone or back-to-back applications.
- Cabinet and individual drawers lock.
- Numerous combinations of customizable interior accessory support tools.
- Wardrobe compartment options.
- Foot pedals or hand releases rotate storage for optimal use of your space.



A high impact storage solution that offers equal merit as part of the workstation standard or as standalone units placed strategically throughout the office.

SPECIFICATIONS

- **Suggested Heights:**
 - 2 High - 29¹/₂"
 - 3 High - 41⁵/₈"
 - 4 High - 50⁵/₈"
 - 5 High - 60⁷/₈"
 - 6 High - 71³/₈"
 - 5 High+ - 66¹/₈"
 - 6 High+ - 76⁵/₈"
- **Starter Widths:**
 - 36¹/₂"
 - 45¹/₄"

